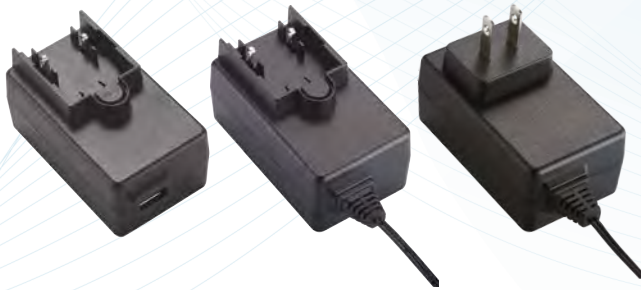


Level VI

CoC Tier 2



12 Watt Series

Wall Mount Type
USA / Japan / Taiwan / Europe / UK /
Australia / China

WM13 - 10 X X Y



Green Mode

CEC, DoE Level VI, Energy Star, ErP Stage 2, CoC Tier 2, NRCan & GEMS Level VI
No Load Power Consumption Less Than 0.075W

Features :

- 100-240VAC Universal Input
- Single Output to 12W
- Regulated Output With Low Ripple Noise
- Safety Agency Requirements and EMI/EMS Certified
- Modified and Custom Design Available
- 1 Year Warranty

| Model | O/P Voltage | O/P Current | Watt |
|------------|-------------|-------------|--------|
| WM13-1003 | 3.3V | 2.00A | 6.60W |
| WM13-1005 | 5.0V | 2.00A | 10.00W |
| WM13-1005A | 5.0V | 2.50A | 12.50W |
| WM13-1006 | 5.9V | 2.00A | 11.80W |
| WM13-1008 | 8.4V | 1.30A | 10.92W |
| WM13-1009 | 9.0V | 1.20A | 10.80W |
| WM13-1012 | 12.0V | 1.00A | 12.00W |
| WM13-1013 | 13.5V | 0.89A | 12.00W |
| WM13-1015 | 15.0V | 0.80A | 12.00W |
| WM13-1018 | 18.0V | 0.67A | 12.00W |
| WM13-1024 | 24.0V | 0.50A | 12.00W |

Input

| | |
|----------------|---|
| Voltage | 100-240VAC |
| Line Frequency | 50-60Hz |
| Current | 0.31A Max. |
| Protection | Internal Primary Current Fuse |
| Configuration | U for US Plug / JP Plug E for EU Plug B for UK Plug A for AU Plug C for CN Plug |

Output

| | |
|--------------------|--|
| Load Regulation | ±5% (Typical) |
| Ripple | 2% Vp-p Max. for Output Voltage@ Full Load |
| Transient Response | 0.5mS for 50% Load Change Typical |
| Hold-up Time | 10mS @ Full Load |
| Protection | Short Circuit Protection / Over Voltage Protection / Over Current Protection |
| DC Cord | 22AWG / 20AWG / 18AWG |
| Ferrite Core | Yes |

Safety Approvals

For USA- CB / UL / cUL / FCC / PSE / BSMI / LPS
For Europe & UK - CB / CE / GS / LPS
For China - CB / CCC / LPS
For Australia - CB / RCM / LPS

Electrical

| | |
|----------------------------|---|
| Topology | Switching Flyback |
| Dielectric Withstand | 3000VAC Primary - Secondary |
| Leakage Current | 0.25mA |
| Efficiency | DoE Level VI, Energy Star, ErP Stage 2, CoC Tier 2, NRCan Certified |
| EMI Conduction & Radiation | Compliance to IEC55032 Class B |
| Harmonic Current | Compliance to EN61000-3-2,3 |
| EMS Immunity | Compliance to IEC61000-4-2,3,4,5,6,8,11 |
| MTBF | 300,000 Calculated Hours at 25°C , by Telcordia SR-332 |

Environmental

| | |
|-----------------------|--|
| Operating Temperature | 0 to + 40°C |
| Storage Temperature | -20 to + 80°C |
| Relative Humidity | Operating : 20 to 80% RH Storage : 10 to 90% RH |
| Cooling | Natural Convection Cooling |

Mechanical

| | |
|----------------|---|
| Case Dimension | U - L 72 x W 34 x H 59 (mm) E - L 72 x W 34 x H 80 (mm) B - L 72 x W 50 x H 71 (mm) C - L 72 x W 34 x H 58 (mm) A - L 72 x W 40 x H 68 (mm) |
| Weight | U : 126g B : 130g E : 128g C : 126g (Ref.) A : 126g |

